

We are manufacturers in Italy

1969



2019

BANMETEM

Mounting Accessories For Radio Antennas

- 1"-14 threads mounts
- 1" GAS mounts
- Mast mounts
- Navy mounts
- HF antennas accessories
- TV antennas mounts

...from the family experience in Marconi

since
1969



1974
the First Genoa Boat Show



1978 The new area of factory



1980

The new electronic department



1985
The First Miami
Boat Show

2002 Installation at Pisa Airport



2012 - 2014 - 2016 Eurosatory Paris



2019 50 years of research, development,
innovations: always side by side with your installations,
offering ALWAYS SOLUTIONS

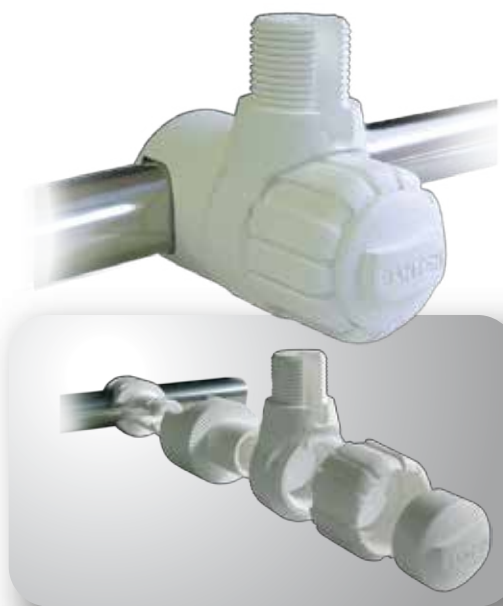




Code Name **00054**
4 Way Nylon Base

GENERAL FEATURES

Material	Nylon
Colour	White
Fittings	1"-14 Threads
Packaging	only mounted base



Code Name **00146**
Rail Fast Base

GENERAL FEATURES

Material	Nylon
Colour	White
Fittings	1"-14 Treads
Packaging	only mounted base

accessories



Code Name **00154**
Simple Nylon Base

GENERAL FEATURES

Material	Nylon
Colour	White
Fittings	1"-14 Threads
Packaging	Only mounted base

info@banten.com

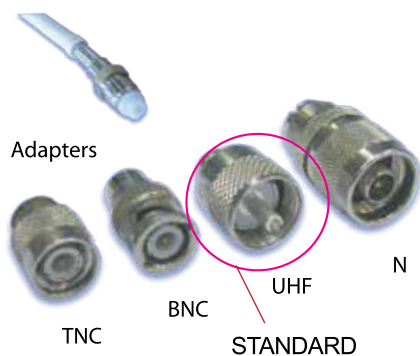


Code Name **00198**
Deck Mount Nylon base

GENERAL FEATURES

Material	Nylon
Colour	White
Fittings	1"-14 Threads
Packaging	Only base

www.banten.it



**Code
Name**

**09016
Chrome Brass FastFit Base**

GENERAL FEATURES

Material	Chrome plated Brass
Fittings	1"-14 Treads
Packaging	mounted base with cable, 4 screw, FME/PL adapter



**Code
Name**

**09054
4 Way Nylon FastFit Base**

GENERAL FEATURES

Material	Nylon
Colour	White
Fittings	1"-14 Threads
Packaging	mounted base with cable, FME/PL adapter

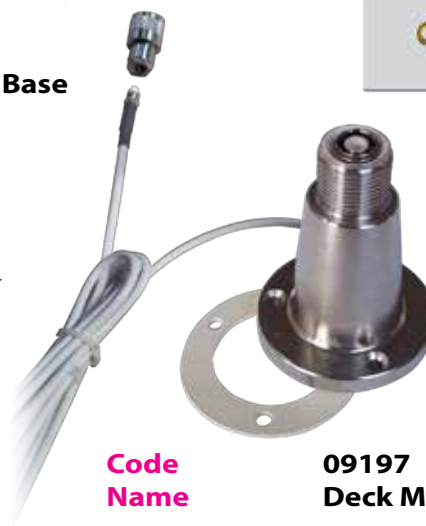


**Code
Name**

**09198
FastFit Nylon Base**

GENERAL FEATURES

Material	Nylon
Colour	White
Fittings	1"-14 Threads
Packaging	mounted base with cable, FME/PL adapter



**Code
Name**

**09197
Deck Mount FasFit Inox base**

GENERAL FEATURES

Material	AISI 316
Fittings	1"-14 Threads
Packaging	base with cable, FME/PL adapter

accessories



Code Name **00046**
Rail Fast Base

GENERAL FEATURES

Material	Chrome Plated Brass
Fittings	1"-14 Threads
Hardware	Stainless Steel 18/10 (A4)
Packaging	mounted base
Pass cable hole	in the threaded top



Code Name **00146**
Rail Fast Base

GENERAL FEATURES

Material	Chrome Plated Brass
Fittings	1"-14 Threads
Hardware	Stainless Steel 18/10 (A4)
Packaging	mounted base
Pass cable hole	in the base

accessories



Code Name **00197**
Deck Mount Inox base

GENERAL FEATURES

Material	Stainless Steel
Fittings	1"-14 Threads
Packaging	Only the base



Code Name **10197**
Deck Mount Inox base

GENERAL FEATURES

Material	AISI 316
Fittings	1"-14 Threads
Packaging	Only the base



Code Name **00055**
Inox Bracket

GENERAL FEATURES

Material	Stainless Steel
Fittings	1"-14 Threads
Packaging	only the bracket



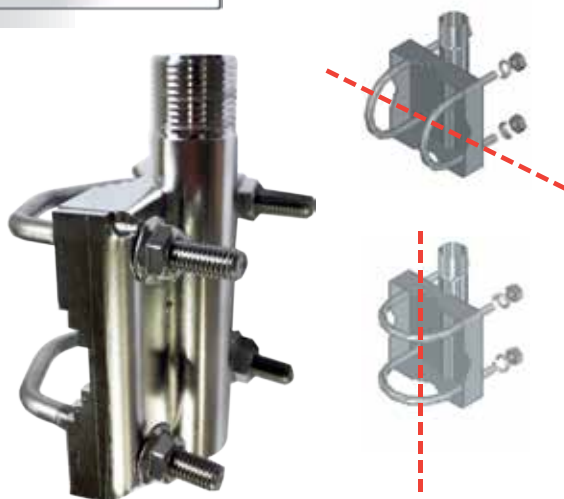
Code Name **00146**
Stand Off Inox Bracket

GENERAL FEATURES

Material	Stainless Steel
Fittings	1"-14 Threads
Stand Off	5"
Packaging	only the bracket

accessories

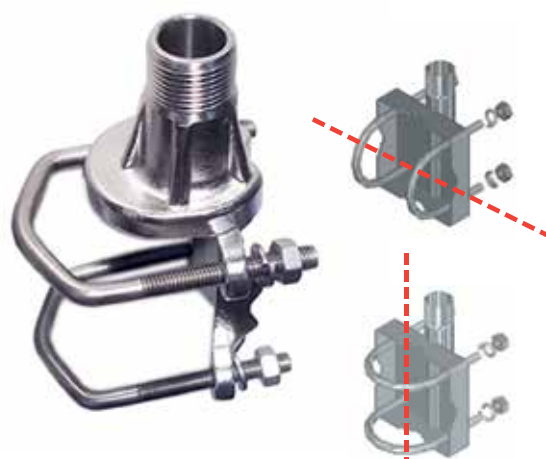
accessories



Code Name **00618**
Inox Rail Bracket

GENERAL FEATURES

Material	Stainless Steel
Fittings	1"-14 Treads
Mount on tube	from 10 to 50 mm, H or V
Hardware	Stainless Steel 18/10 (A4)
Packaging	Bracket and clamps, nuts and grover



Code Name **15196**
Inox Rail Bracket

GENERAL FEATURES

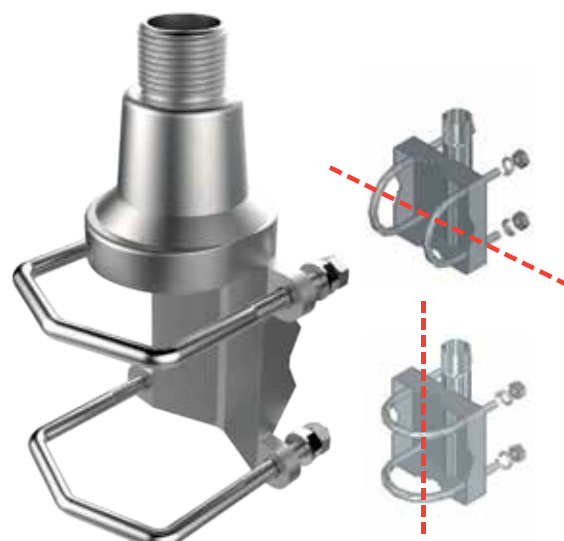
Material	Molded Stainless Steel
Fittings	1"-14 Treads
Mount on tube	from 10 to 50 mm, H or V
Hardware	Stainless Steel 18/10 (A4)
Packaging	Bracket and clamps, nuts and grover



Code Name 00505
1" GASStand Off Inox Bracket

GENERAL FEATURES

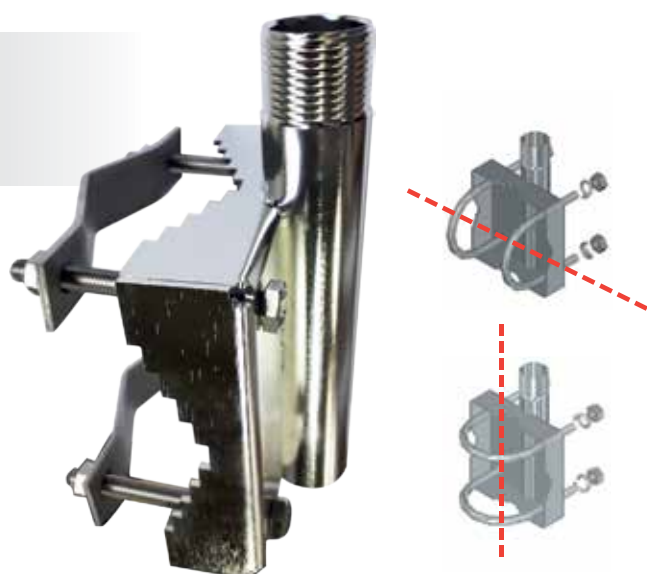
Material	Stainless Steel
Fittings	1"GAS Threads
Hardware	AISI 316
Mounting on mast	from 25 to 100 mm (1" up to 2 1/2")
Stand Off	250 mm (9,85")
Packaging	inox bracket, inox hardware



Code Name 15199
1" GAS male INOX Bracket

GENERAL FEATURES

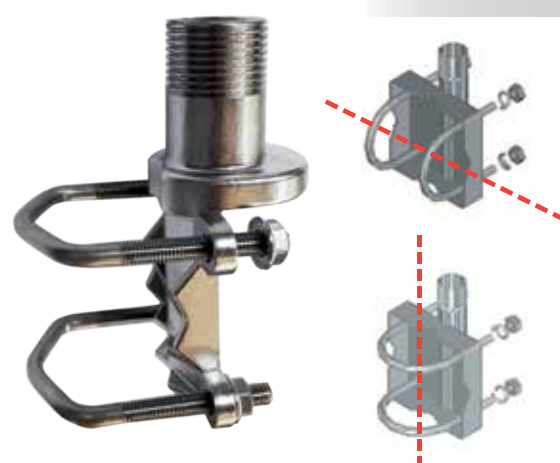
Material	Stainless Steel
Fittings	1"GAS Threads
Hardware	AISI 316
Mounting on mast	from 33 to 78 mm (1" up to 2")
Packaging	Inox bracket, hardware, inox clamps



Code Name 00617
1" GAS Inox Rail Bracket

GENERAL FEATURES

Material	Stainless Steel
Fittings	1"GAS Treads
Mount on tube	from 25 to 88 mm, H or V
Hardware	Stainless Steel 18/10 (A4)
Packaging	Bracket and clamps, nuts and grover



Code Name 15296
1" GAS Inox Rail Bracket

GENERAL FEATURES

Material	Molded Stainless Steel
Fittings	1"GAS Treads
Mount on tube	from 25 to 88 mm, H or V
Hardware	Stainless Steel 18/10 (A4)
Packaging	Bracket and clamps, nuts and grover



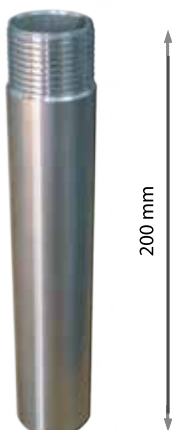
150 mm

**Code
Name**

00502
**1" GAS male adapter,
for 1"-14 th bases**

GENERAL FEATURES

Material	Chrome Plated Brass
Fittings	1" GAS Threads
Mounting	1"-14 th
Packaging	only adapter



200 mm



**Code
Name**

00504
Pipe Mount

GENERAL FEATURES

Material	Stainless Steel
Fittings	1" GAS Threads
Mounting	to weld on S/S structure
Packaging	only inox tube

accessories

**Code
Name**

11505
1" GAS Pipe Bracket

GENERAL FEATURES

Material	Stainless Steel
Fittings	1" GAS Threads
Hardware	AISI 316
Mounting on mast	from 33 to 78 mm (1" up to 2")
Packaging	Inox bracket, hardware, inox clamps



**Code
Name**

00503
Deck Mount Inox base

GENERAL FEATURES

Material	Stainless Steel
Fittings	1" GAS Threads
Packaging	Only the base



**Code
Name**

10503
Deck Mount Inox base

GENERAL FEATURES

Material	Molded AISI 316
Fittings	1" GAS Threads
Packaging	Only the base

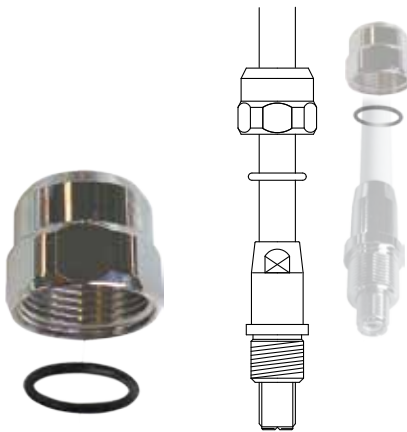
- Typical strong, highest quality for Professional installations
- For Fishing boat, vessels and Professional boat

NAVY



15533 Mast L bracket

Material: Chrome Plated Brass
Including Bolt 1" -14 Female



15193 1"GAS mount

Material: Chrome Plated Brass
Bolt 1" Gas Female
Including Rubber O-Ring



15195 Bolt 1"-14 fem

Material: Chrome Plated Brass
Bolt 1" -14 Female



15650 Adapter 1"-14 fem

Material: Chrome Plated Brass
thread: 1" -14 Female/1" -14 Female
High: 11 cm

NEW Directly without Bolt



10504 1"14 female inox base

Material: molded Stainless Steel
thread: 1" -14 Female
High: 7,5 cm



accessories



620-2 Mast L bracket

Material: Stainless steel
Bolt 1" -14 Female
for tube dia 10 to dia 50 mm



Directly without Bolt



15197 female thread Bracket

Material:	Composite
Hardware	Stainless Steel
for tube dia 33 mm (1") to dia 60 mm (2")	



15198 male 1" thread Bracket

Material:	Composite
Hardware	Stainless Steel
for tube dia 33 mm (1") to dia 60 mm (2")	

NAVY

- Typical strong, highest quality
for Professional installations

- For Fishing boat,
vessels and Professional boat



00502 Adapter 1"GAS

Material:	Chrome Plated Brass
thread:	1"-14 Female/1" GAS male
High:	12 cm



10503 1" GAS Deck inox base

Material:	molded Stainless Steel
thread:	1"- 11 BSP GAS male
High:	7,5 cm



accessories



15199 Male 1" thread Bracket

Material:	Stainless steel
thread:	1"- 11 BSP GAS male
for tube dia 33 mm (1") to dia 60 mm (2")	



**Code
Name**

**00024
End Line Insulator
for wire aerials**

GENERAL FEATURES

Material	White Valox®
Lenght	210 mm (8 Inch)
Insulation	100 Kv
Packaging	only insulator



**Code
Name**

**00023
End Line Insulator
for wire aerials**

GENERAL FEATURES

Material	White Valox®
Lenght	135 mm (5 Inch)
Insulation	63 Kv
Packaging	only insulator



**Code
Name**

**00215
Plastic Spherical base 360°**

GENERAL FEATURES

Material	Entirely in White Plastic
Fittings	1"-14 Male Threads
Packaging	Only the base without screw



**Code
Name**

**00021
Feed Trough**

GENERAL FEATURES

Material	White Valox®
Lenght	120 mm (5 Inch)
Hardware	AISI 316
Insulation	100 Kv
Packaging	Feed trough, with mounted AISI hardware



**Code
Name**

**00015
Spherical base 360°**

GENERAL FEATURES

Material	Below part: Chrome Plated Brass; Up part: Plastic
Fittings	1"-14 Male Threads
Packaging	Only the base without screw



**Code
Name**

**00020
Half Way Bracket
with mobile rotule**

GENERAL FEATURES

Material	Plastic
for antennas dia	41 mm
Packaging	Only the bracket



Code Name **00199**
Deck mount base for TV/250

GENERAL FEATURES

Material	White Nylon
Packaging	Only the base without screw



Code Name **10297**
DECK MOUNT for TV/250

GENERAL FEATURES

Material	Molded Stainless Steel
Lenght	75 mm
Tubular support for	TV/250 Antennas code 00250
Packaging	only base, without hardware



Code Name **00096**
S/S bracket for TV/250

GENERAL FEATURES

Material	Solded Stainless Steel
Stand Off Lenght	220 mm
Tubular support for	TV/250 Antennas code 00250
Packaging	only bracket without hardware



Code Name **00097**
DECK MOUNT for TV/250

GENERAL FEATURES

Material	Solded Stainless Steel
Lenght	75 mm
Tubular support for	TV/250 Antennas code 00250
Packaging	only base, without hardware



Code Name **10064**
DECK MOUNT for TV/350

GENERAL FEATURES

Material	Molded Stainless Steel
Lenght	75 mm
Tubular support for	TV/350 Antennas code 00550
Packaging	only base, without hardware



Code Name **00064**
DECK MOUNT for TV/350

GENERAL FEATURES

Material	Solded Stainless Steel
Lenght	75 mm
Tubular support for	TV/350 Antennas code 00350
Packaging	only base, without hardware



Code Name **00063**
S/S bracket for TV/350

GENERAL FEATURES

Material	Solded Stainless Steel
Stand Off Lenght	250 mm
Tubular support for	TV/350 Antennas code 00350
Packaging	only bracket without hardware

Code	00013	00120	00038	00068	00161	01168	01161
GENERAL FEATURES							
Material	Fiberglass	Fiberglass	Fiberglass	Fiberglass	Fiberglass	Aluminium	Aluminium
Lenght	4,0 mt (13 ft.)	3,0 mt (10 ft.)	2,0 mt (6,5 ft.)	1,0 mt (3 ft.)	0,5 mt (1,6 ft.)	0,6 mt (2 ft.)	0,3 mt (1 ft.)
Diemeter	40 mm (1,57")	40 mm (1,57")	28 mm (1,1")	28 mm (1,1")	28 mm (1,1")	28 mm (1,1")	28 mm (1,1")
Ferrule	Chr. Plat. Brass	Chr. Plat. Brass	Chr. Plat. Brass	Chr. Plat. Brass	Chr. Plat. Brass	Chr. Plat. Brass	Chr. Plat. Brass



01168
01161

00038
00068
00161

00013
00120

accessories



Code
Name

01991
Rubber Ring for Flags

GENERAL FEATURES

Material	White Rubber
Kit	complete for two sizes



Connectors and Cables



Code	01444	01443	01445	01526	01332	00050	00162	01331	00133
GENERAL FEATURES									
Type	F Connector	F Connector	F/F Coupler	IEC Connector	Radio Connector	N Connector	N Connector	PI Connector	PI Connector
Male/Female	male	male	female/female	male	male	male	male	male	male
for Cable	RG 58	RG 59		C8 B90	C8 B90	RG 58	RG 213	RG 58	RG 213

Cable Features



BANTEN Codes		00037	00135		00144		00156	00066	
	RG-58	RG-58C/U MIL	RG-213C/U MIL	BELDEM 9913	CO-100	CO-150	RG-59C/U MIL	CO-8	CO-10
Jacket	ø 5 mm		ø 10 mm		ø 5 mm	ø 6,9 mm	ø 6,2 mm	ø 5 mm	ø 6,89 mm
Material	White PVC		Black PVC				Black PVC	White PVC	
Impedance	50 Ohm +/- 2%						75 Ohm +/- 2%		
Insulation	PE			Air	PE foam		PE	PE foam	
Screen	Cu/Sn 75%	Cu/Sn 94%	Cu/Sn 96%	Tape+Cu 88%	PEC+tape Al+CU/sn 75%		Cu/Sn 94%	PEC+tape Al+CU/sn 75%	
Screen loss	>40 db	>55 db	>55 db	>80 db	>90 db	>90 db	>55 db	>85 db	>85 db
5 years aging loss	5%	5%	5%	5%	Zero	Zero	5%	Zero	Zero
Bending radius	5 mm	5 mm	15 mm	100 mm	50 mm	50 mm	5 mm	20 mm	50 mm
db loss x 1 meter cable									
CB 27 Mhz	0,03	0,03	---	---	---	--	--	--	--
VHF 156-163 Mhz	0,20	0,20	0,09	0,05	0,10	0,08	--	--	--
C ell 900 Mhz	0,60	0,60	0,26	0,14	0,19	0,19	--	--	--
C ell 1700-1900 Mhz	1,80	1,80	0,51	0,23	0,43	0,29	--	--	--
T V 800 Mhz	--	--	---	---	---	--	0,35	0,22	0,19
T V-SA T 2050 Mhz	--	--	---	---	---	--	1,20	0,37	0,30

dB loss x meter cable



Code Name **01530 TV Cable**

GENERAL FEATURES

Material	C8 B90 75 Ohm
Lenght	1,5 m
End with	IEC male/IEC male



Code Name **00148 RG58 Cable**

GENERAL FEATURES

Material	RG58 50 Ohm
Lenght	5,0 m
End with	PL male/PL male

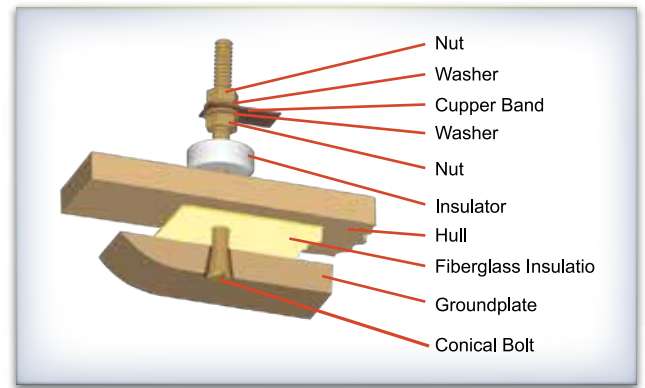
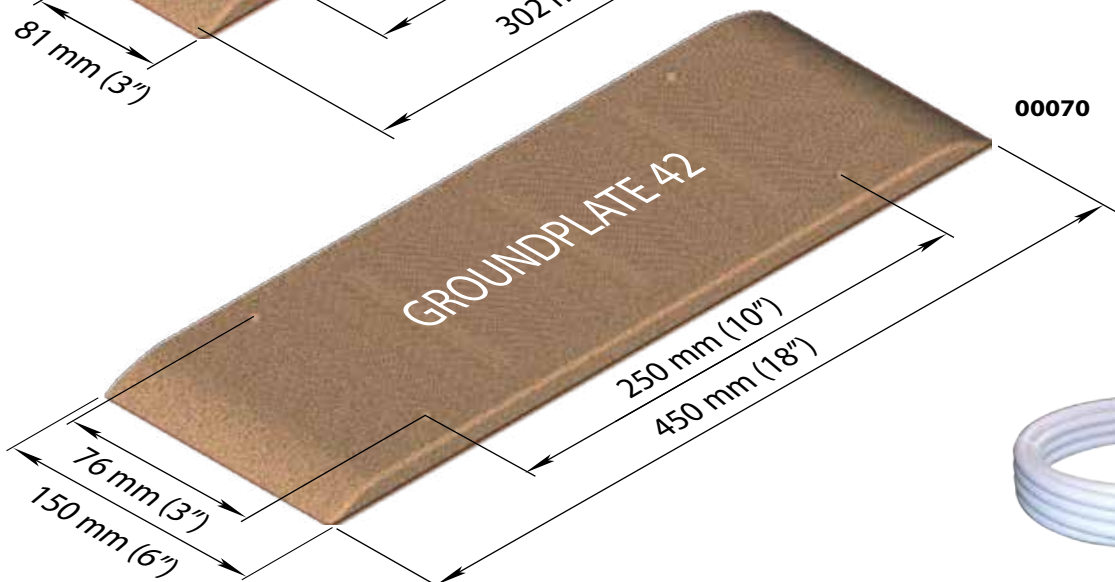
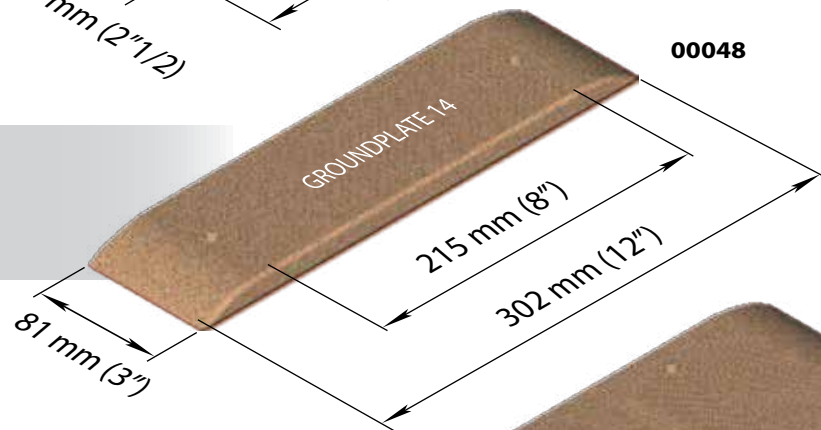
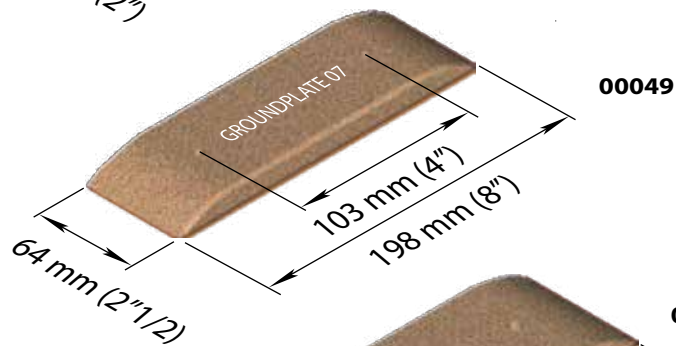
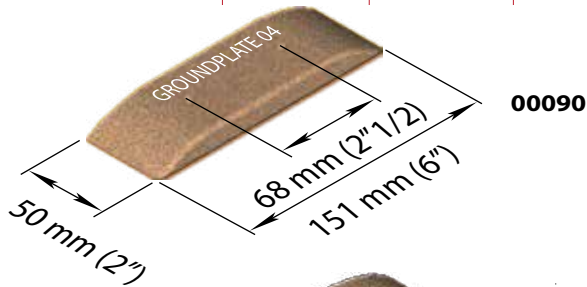


Code Name **01148 RG58 Cable**

GENERAL FEATURES

Material	RG58 50 Ohm
Lenght	1,0 m
End with	PL male/PL male

Code	00090	00049	00048	00070
GENERAL FEATURES				
Material	Fiberglass	Fiberglass	Fiberglass	Fiberglass
Lenght	4,0 mt (13 ft.)	3,0 mt (10 ft.)	2,0 mt (6,5 ft.)	1,0 mt (3 ft.)
Diameter	40 mm (1,57")	40 mm (1,57")	28 mm (1,1")	28 mm (1,1")
Ferrule	Chr. Plat. Brass	Chr. Plat. Brass	Chr. Plat. Brass	Chr. Plat. Brass



Code Name 00092 Copper Band

GENERAL FEATURES

Width	50 mm
Thikness	0,5 mm



00092 - 10 meter coil

00091 - 20 meter coil

accessories

Code Name 00099 Extra Lenght Bolt

GENERAL FEATURES

Bolts	2 x M8 100 mm lenght	Pure Bronze
Bush	3 x M8	Pure Bronze
Nutz	4 x Dia 8	Brass
Distance Block	2 pcs	Nylon



Code Name 00160 White High Insulation Cable

GENERAL FEATURES

Lenght	10 mt
Diameter	10 mm
Insulation	63 Kv



1969



2019

BANTEN

Web www.banten.it

Mail info@banten.com

Sales sales@banten.com

Technical Info technical@banten.com

BANTEN - Via S. Maria, 13 - 16042 CARASCO (Genoa) ITALY

Tel +39(0)185 350553

Tel +39(0)185 352149

Fax +39(0)185 350957